



CUBA · HAVANA



Check in 16:00 Hrs
Check out 12:00 Hrs

All room types include:



Telephone



Hair Dryer



Bathroom with shower



Iron



Safe



Laundry service (\$)



Air Conditioner



24h Room service (\$)



Minibar (\$)



TV



Pool towels



Coffee Maker



Coffee / Tea Kit



Concierge Services



Bottle of water (1st in courtesy)



Bathrobe and slippers





Deluxe

Maximum Accommodation: 2A + 2C / 3A*

Description:

View to Inner Courtyard and the City to Genios street.

*(Valid note for all hotels)
A - Adults
C - Childs
P - Passenger of any age



M² 36



King size bed (2x2m)
 o 2 Twins Beds
 (1.50x2m)



Deluxe Prado

Maximum Accommodation: 2A + 2C / 3A

Description:

Views to Prado Avenue.



M² 36



King size bed (2x2m)
 o 2 Twins Beds
 (1.50x2m)



Deluxe Premium

Maximum Accommodation: 2A + 2C / 3A

Description:

More spacious with views to Genios or Prado street.



M² 44



King size bed (2x2m)
 o 2 Twins Beds
 (1.50x2m)



Sofa



City View



Deluxe Premium Prado

Maximum Accommodation: 2A + 2C / 3A

Description:

More spacious with views to Prado Avenue.



M² 44



King size bed (2x2m)
o 2 Twins Beds
(1.50x2m)



Sofa



City View



Deluxe Atlantic

Maximum Accommodation: 2A + 2C / 3A

Description:

Sea View and to the entrance of Havana's bay



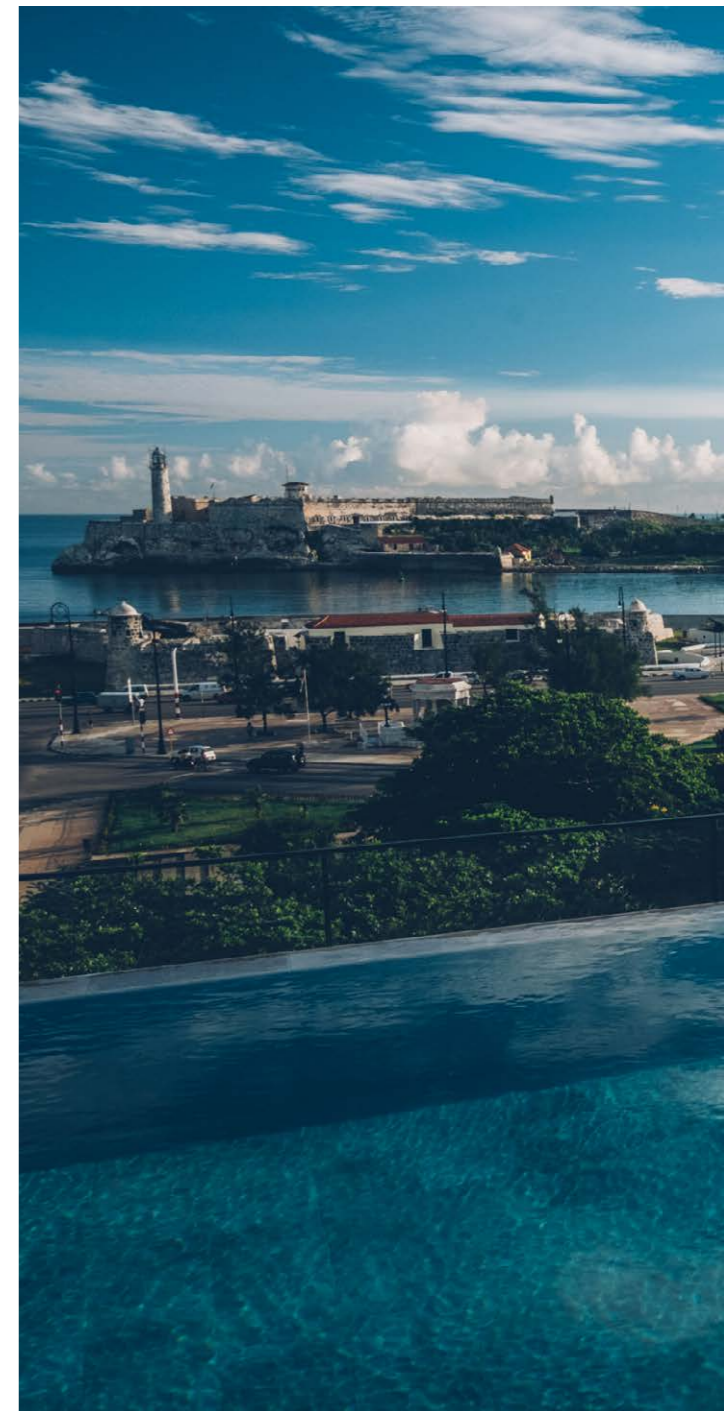
M² 36



King size bed (2x2m)
o 2 Twins Beds
(1.50x2m)



Sea View





EXCLUSIVE ZONE

- VIP Reception
- Private breakfast room
- Butler service 08-23:00 hrs
- Daily turndown service
- Personalized mini bar with premium drinks (\$)
- Late check out (subject to availability)
- Welcome detail



Cosmos Level Services



Private Check In/Check Out



Butler services



Pillow Menu (\$)



25% Discount on treatments



Cosmos Deluxe

Maximum Accommodation: 2A

Description:

View to Inner courtyard
Located on 10th floor



M² 36



King size bed (2x2m)
o 2 Twins Beds (1.50x2m)



Cosmos Deluxe Prado

Maximum Accommodation: 2A

Description:

Prado Avenue view on 10th floor.
Located on 10th floor



M² 36



King size bed (2x2m)
o 2 Twins Beds (1.50x2m)



City View



Cosmos Deluxe Atlantic

Maximum Accommodation: 2A

Description:

Sea View and to the entrance of Havana's bay
Located on 10th floor an last floor.



M² 36



King size bed (2x2m)
o 2 Twins Beds
(1.50x2m)



Sea View



Suite

Maximum Accommodation: 2A

Description:

Views to the city to Genios street
Located from 2nd to 10th floor



M² 60



City View



King size bed (2x2m)
o 2 Twins Beds
(1.50x2m)



Bath Tub



Suite Prado

Maximum Accommodation: 2A

Description:

View to Prado Avenue
1 free massage service per stay
1st ironing service free



M² 70



City View



King size bed (2x2m)
o 2 Twins Beds
(1.50x2m)



Bath Tub



Suite Faro

Maximum Accommodation: 2A

Description:

Views to the Castle of the 3 Kings of Morro
 1st ironing service free
 1 free massage service per stay
 10% discount on hotel restaurants



M² 70



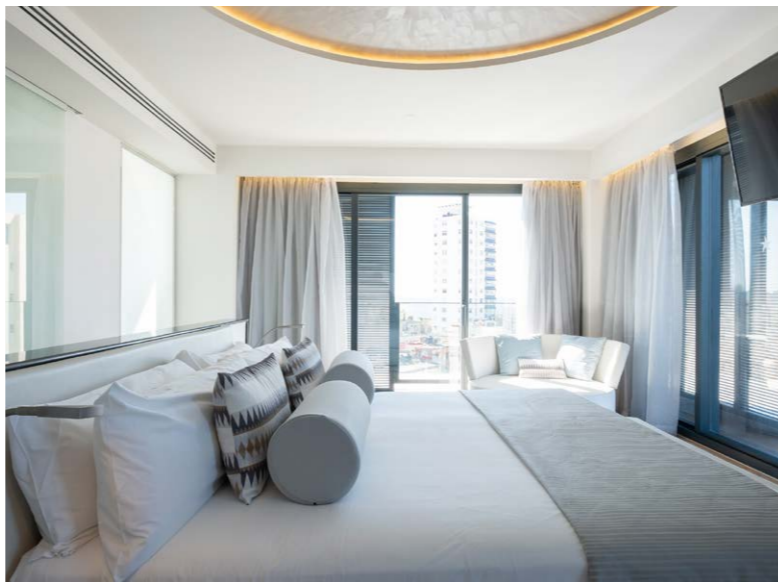
King size bed (2x2m)



Whirlpool bath



Sea View



Suite Bahía

Maximum Accommodation: 2A

Description:

Corner suite with views to the Havana's Bay and Prado Avenue
 Located in the last 3 floors.
 1st ironing service free
 1 free massage service per stay
 10% discount on hotel restaurants



M² 85



Sea View



King size bed (2x2m)



Whirlpool bath



Suite Packard

Maximum Accommodation: 2A

Description:

Presidential Suite located on 4th floor
 1 massage 1hr free per person
 Breakfast in the room included (on request)
 Dinner à la carte in the room (\$)
 1st ironing service free



M² 110



King size bed (2x2m)



Terrace



Whirlpool bath



Laundry service